

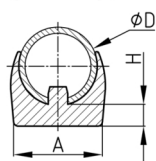
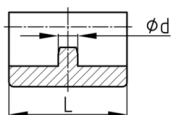


Walter Bethke GmbH & Co. KG

Technische Kunststoff - und Hybridprodukte

Produktgruppe KSGW 2

Klemmschalengleiter aus LD-PE mit Zapfen

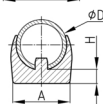
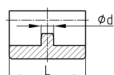


Standardfarben

- schwarz

Material

- Grundkörper: LD- Polyethylen (LD-PE)



Bestellnummer	A	D	d	H	L
	mm	mm	mm	mm	mm
KSGW2 12	16	12	5,3	6	30