

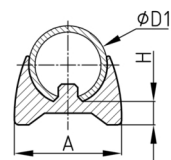
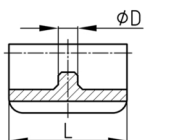


Walter Bethke GmbH & Co. KG

Technische Kunststoff - und Hybridprodukte

Produktgruppe KSGA

Klemmschalengleiter aus PP

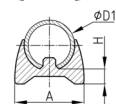


Standardfarben

- schwarz

Material

- Grundkörper: Polypropylen (PP)



Bestellnummer	A	D	D1	H	L
	mm	mm	mm	mm	mm
KSGA 10-11	16,5	4,3	10-11	5	28
KSGA 12-13	20	4,9	12-13	6	28
KSGA 14-15	23	4,9	14-15	7	28
KSGA 15-16	26	5,8	15-16	8	28