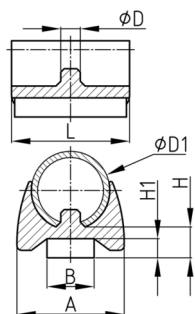


Produktgruppe KSGAF

Klemmschalengleiter aus PP mit Filzgleitfläche

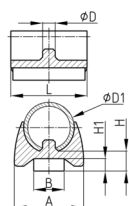


Standardfarben

- schwarz

Material

- Grundkörper: Polypropylen (PP)
- Gleitfläche: Filz



| Bestellnummer | A | B | D | D1 | H | H1 | L |
|---------------|------|----|-----|-------|----|----|----|
| | mm | mm | mm | mm | mm | mm | mm |
| KSGAF 10-11 | 16,5 | 7 | 4,3 | 10-11 | 6 | 1 | 28 |
| KSGAF 12-13 | 20 | 7 | 4,9 | 12-13 | 7 | 1 | 28 |
| KSGAF 14-15 | 23 | 10 | 4,9 | 14-15 | 8 | 1 | 28 |
| KSGAF 15-16 | 26 | 10 | 5,8 | 15-16 | 9 | 1 | 28 |