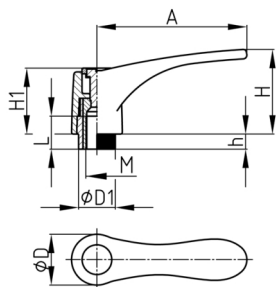


Produktgruppe KLH10M

Klemmhebel aus PA 6 mit Messing-Gewindebuchse, verstellbar mit Druckknopf

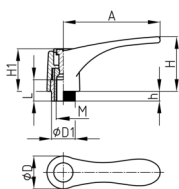


Standardfarben

- schwarz

Material

- Grundkörper: Polyamid 6 (PA 6)
- Gewindebuchse: Messing
- Druckknopf: Polyamid 6 (PA 6)



| Bestellnummer | A | D | D1 | H | h | H1 | L | M |
|------------------|-----|----|----|----|----|----|----|-----|
| | mm | mm | mm | mm | mm | mm | mm | |
| KLH10M 80 / M6 | 80 | 27 | 12 | 41 | 9 | 31 | 17 | M6 |
| KLH10M 80 / M8 | 80 | 27 | 12 | 41 | 9 | 31 | 17 | M8 |
| KLH10M 80 / M10 | 80 | 27 | 12 | 41 | 9 | 31 | 17 | M10 |
| KLH10M 80 / M12 | 80 | 27 | 12 | 41 | 9 | 31 | 17 | M12 |
| KLH10M 100 / M8 | 100 | 33 | 12 | 53 | 12 | 38 | 17 | M8 |
| KLH10M 100 / M10 | 100 | 33 | 12 | 53 | 12 | 38 | 17 | M10 |
| KLH10M 100 / M12 | 100 | 33 | 12 | 53 | 12 | 38 | 17 | M12 |