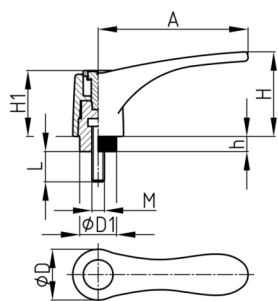


### Produktgruppe KLH10B

Klemmhebel aus PA 6 mit Gewindebolzen, verstellbar mit Druckknopf

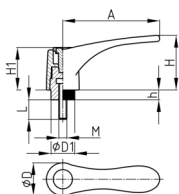


#### Standardfarben

- schwarz

#### Material

- Grundkörper: Polyamid 6 (PA 6)
- Gewindebolzen: Stahl verzinkt
- Druckknopf: Polyamid 6 (PA 6)



| Bestellnummer      | A   | D  | D1 | H  | h  | H1 | L  | M   |
|--------------------|-----|----|----|----|----|----|----|-----|
|                    | mm  | mm | mm | mm | mm | mm | mm | mm  |
| KLH10B 80 / M6x25  | 80  | 27 | 12 | 41 | 9  | 31 | 25 | M6  |
| KLH10B 80 / M8x15  | 80  | 27 | 12 | 41 | 9  | 31 | 15 | M8  |
| KLH10B 80 / M8x20  | 80  | 27 | 12 | 41 | 9  | 31 | 20 | M8  |
| KLH10B 80 / M8x25  | 80  | 27 | 12 | 41 | 9  | 31 | 25 | M8  |
| KLH10B 80 / M8x30  | 80  | 27 | 12 | 41 | 9  | 31 | 30 | M8  |
| KLH10B 80 / M8x35  | 80  | 27 | 12 | 41 | 9  | 31 | 35 | M8  |
| KLH10B 80 / M8x40  | 80  | 27 | 12 | 41 | 9  | 31 | 40 | M8  |
| KLH10B 80 / M8x50  | 80  | 27 | 12 | 41 | 9  | 31 | 50 | M8  |
| KLH10B 80 / M8x55  | 80  | 27 | 12 | 41 | 9  | 31 | 55 | M8  |
| KLH10B 80 / M8x60  | 80  | 27 | 12 | 41 | 9  | 31 | 60 | M8  |
| KLH10B 80 / M8x70  | 80  | 27 | 12 | 41 | 9  | 31 | 70 | M8  |
| KLH10B 80 / M8x85  | 80  | 27 | 12 | 41 | 9  | 31 | 85 | M8  |
| KLH10B 80 / M8x90  | 80  | 27 | 12 | 41 | 9  | 31 | 90 | M8  |
| KLH10B 80 / M10x15 | 80  | 27 | 12 | 41 | 9  | 31 | 15 | M10 |
| KLH10B 80 / M10x20 | 80  | 27 | 12 | 41 | 9  | 31 | 20 | M10 |
| KLH10B 80 / M10x25 | 80  | 27 | 12 | 41 | 9  | 31 | 25 | M10 |
| KLH10B 80 / M10x30 | 80  | 27 | 12 | 41 | 9  | 31 | 30 | M10 |
| KLH10B 80 / M10x35 | 80  | 27 | 12 | 41 | 9  | 31 | 35 | M10 |
| KLH10B 80 / M10x40 | 80  | 27 | 12 | 41 | 9  | 31 | 40 | M10 |
| KLH10B 80 / M10x50 | 80  | 27 | 12 | 41 | 9  | 31 | 50 | M10 |
| KLH10B 80 / M10x60 | 80  | 27 | 12 | 41 | 9  | 31 | 60 | M10 |
| KLH10B 100 / M8x15 | 100 | 33 | 12 | 53 | 12 | 38 | 15 | M8  |
| KLH10B 100 / M8x20 | 100 | 33 | 12 | 53 | 12 | 38 | 20 | M8  |
| KLH10B 100 / M8x25 | 100 | 33 | 12 | 53 | 12 | 38 | 25 | M8  |
| KLH10B 100 / M8x30 | 100 | 33 | 12 | 53 | 12 | 38 | 30 | M8  |



# Walter Bethke GmbH & Co. KG

Technische Kunststoff - und Hybridprodukte

| Bestellnummer       | A   | D  | D1 | H  | h  | H1 | L  | M   |
|---------------------|-----|----|----|----|----|----|----|-----|
|                     | mm  | mm | mm | mm | mm | mm | mm | mm  |
| KLH10B 100 / M8x35  | 100 | 33 | 12 | 53 | 12 | 38 | 35 | M8  |
| KLH10B 100 / M8x40  | 100 | 33 | 12 | 53 | 12 | 38 | 40 | M8  |
| KLH10B 100 / M10x15 | 100 | 33 | 12 | 53 | 12 | 38 | 15 | M10 |
| KLH10B 100 / M10x20 | 100 | 33 | 12 | 53 | 12 | 38 | 20 | M10 |
| KLH10B 100 / M10x25 | 100 | 33 | 12 | 53 | 12 | 38 | 25 | M10 |
| KLH10B 100 / M10x30 | 100 | 33 | 12 | 53 | 12 | 38 | 30 | M10 |
| KLH10B 100 / M10x35 | 100 | 33 | 12 | 53 | 12 | 38 | 35 | M10 |
| KLH10B 100 / M10x40 | 100 | 33 | 12 | 53 | 12 | 38 | 40 | M10 |
| KLH10B 100 / M10x50 | 100 | 33 | 12 | 53 | 12 | 38 | 50 | M10 |
| KLH10B 100 / M12x20 | 100 | 33 | 12 | 53 | 12 | 38 | 20 | M12 |
| KLH10B 100 / M12x25 | 100 | 33 | 12 | 53 | 12 | 38 | 25 | M12 |
| KLH10B 100 / M12x30 | 100 | 33 | 12 | 53 | 12 | 38 | 30 | M12 |
| KLH10B 100 / M12x35 | 100 | 33 | 12 | 53 | 12 | 38 | 35 | M12 |
| KLH10B 100 / M12x40 | 100 | 33 | 12 | 53 | 12 | 38 | 40 | M12 |
| KLH10B 100 / M12x50 | 100 | 33 | 12 | 53 | 12 | 38 | 50 | M12 |