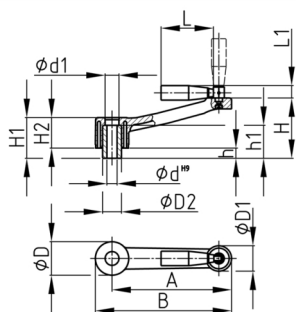


Produktgruppe HKKD

Handkurbel aus PA-GF mit Umlegegriff, Nabe mit Durchgangsbohrung

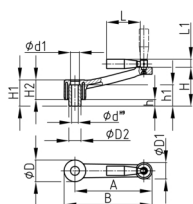


Standardfarben

- schwarz

Material

- Grundkörper: glasfaserverstärktes Polyamid (PA-GF)
- Nabe: Stahl verzinkt



| Bestellnummer | A | B | D | d H9 | D1 | d1 | D2 | H | h | H1 | h1 | H2 | L | L1 |
|---------------|-----|-----|----|------|----|----|----|----|----|----|----|----|----|----|
| | mm | mm | mm | mm | mm | mm | mm | mm | mm | mm | mm | mm | mm | mm |
| HKKD 128 / 10 | 128 | 151 | 45 | 10 | 35 | 18 | 22 | 60 | 10 | 52 | 37 | 42 | 65 | 15 |
| HKKD 128 / 12 | 128 | 151 | 45 | 12 | 35 | 18 | 22 | 60 | 10 | 52 | 37 | 42 | 65 | 15 |
| HKKD 148 / 14 | 148 | 171 | 45 | 14 | 35 | 18 | 22 | 56 | 10 | 52 | 37 | 42 | 65 | 15 |
| HKKD 148 / 16 | 148 | 171 | 45 | 16 | 35 | 18 | 22 | 65 | 10 | 52 | 37 | 42 | 65 | 15 |