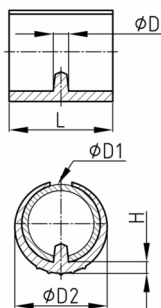


Produktgruppe SP

Klemmschalengleiter aus PE, leichte Ausführung

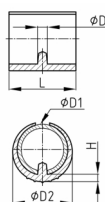


Standardfarben

- schwarz

Material

- Grundkörper: Polyethylen (PE)



| Bestellnummer | D | D1 | D2 | H | L |
|----------------|-----|-------|------|-----|----|
| | mm | mm | mm | mm | mm |
| SP 14-16 | 5,5 | 14-16 | 18,5 | 3,5 | 18 |
| SP 16-18 | 5,5 | 16-18 | 20,5 | 3,5 | 19 |
| SP 18-20 | 5,5 | 18-20 | 22 | 3,5 | 20 |
| SP 20-22 | 5,5 | 20-22 | 24,5 | 4 | 22 |
| SP 24-26 / 5,5 | 5,5 | 24-26 | 28 | 5 | 25 |
| SP 24-26 / 7,5 | 7,5 | 24-26 | 28,5 | 5 | 25 |
| SP 28-30 | 7,5 | 28-30 | 32 | 5,5 | 30 |