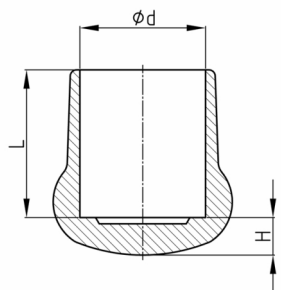


**Produktgruppe** PSP

Kappen aus Weich-PVC für Rundrohre in schwerer Ausführung

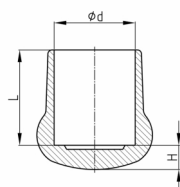


**Standardfarben**

- schwarz

**Material**

- Weich-PVC (PVC-P)



Bestellnummer	d	H	L
	mm	mm	mm
PSP 20	20	10	27
PSP 28	28	9	40
PSP 30	30	8,5	39
PSP 32	32	8,5	40,5
PSP 35	35	11,5	42,5
PSP 38	38	11,5	45,5
PSP 40	40	11	47,5