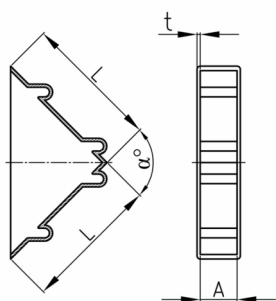


Produktgruppe LSE

Schutzecken aus Polyethylen

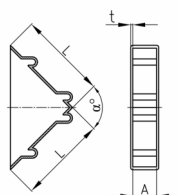
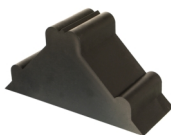


Standardfarben

- schwarz

Material

- Polyethylen (PE)



- Verwendung als Transportschutzecken, Stülpecken, Eckenschutzkappen

Bestellnummer	α °	A mm	L mm	t mm
LSE 2	90	2-3	50	1
LSE 3 / 30	90	3-4	30	1
LSE 3	90	3-4	50	1
LSE 4	90	4-5	50	1
LSE 5	90	5-6	50	1
LSE 7	90	7-8	50	1
LSE 9	90	9-10	50	1
LSE 11	90	11-12	50	1
LSE 15	90	15-16	50	1
LSE 19	90	19-20	50	1
LSE 21	90	21-22	50	1
LSE 25	90	25-26	50	1
LSE 28,5	90	28,5-30	50	1
LSE 32	90	32-33	50	1
LSE 39	90	39-40	50	1
LSE 49	90	49-50	50	1