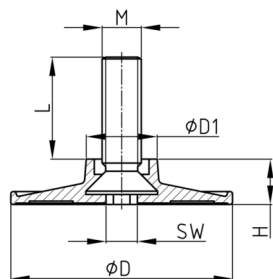


Product Group KS

Adjusting screws with round plastic base made of PP

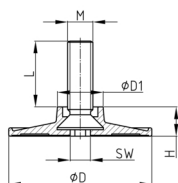


Standard Colours

- black

Material

- Base: Polypropylene (PP)
- Thread: steel



Order Number	D	D1	H	L eff.	M	WAF
	mm	mm	mm	mm		mm
KS 40 M8x20	40	16,5	10	13	M8	5
KS 40 M8x30	40	16,5	10	23	M8	5
KS 40 M8x40	40	16,5	10	33	M8	5
KS 40 M10x20	40	16,5	10	13	M10	5
KS 40 M10x30	40	16,5	10	23	M10	5
KS 40 M10x40	40	16,5	10	33	M10	5