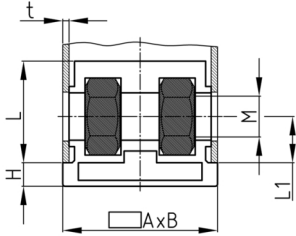


### Product Group SERM2

Screw corner connectors made of PA with collar for rectangular tubes and two bright galvanized hexagon steel nuts

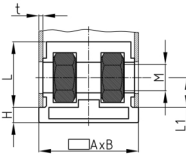


#### Standard Colours

- black

#### Material

- Base body: Polyamide (PA)
- Nut: zinc-plated steel



#### Product information

- For tubes lying on edge
- With collar for lateral tube conclusion
- The surface of the articles may vary due to production.
- Order-related production for individual article sizes! Please ask for minimum quantity.
- Fixing of rollers with threaded pin in vertical standing rectangular tubes.
- Fixing of wheels or adjustable feet of horizontally lying tubes.
- Right-angled connection to trusses

#### Product options on inquiry

- Supplied with stainless steel nuts
- Special colours

Order Number	A	B	H	L	L1	M	t
	mm	mm	mm	mm	mm		mm
SERM2 30x20x1,5 M8	30	20	4	41	15	M8	1,5
SERM2 30x20x2 M8	30	20	4	40	15	M8	2
SERM2 40x20x1,5 M8	40	20	2	43	30	M8	1,5
SERM2 40x25x1,5 M8	40	25	1,8	42,8	30	M8	1,5
SERM2 40x30x1,5 M8	40	30	2	44	30	M8	1,5
SERM2 40x30x1,5 M10	40	30	2	44	30	M10	1,5
SERM2 45x25x2 M10	45	25	2,5	41,5	20	M10	2
SERM2 50x20x1,5 M8	50	20	1,8	42,8	30	M8	1,5
SERM2 50x24,2x2 M10	50	24,2	2,8	34,8	20	M10	2
SERM2 50x30x1,5 M10	50	30	2	44	30	M10	1,5
SERM2 50x30x2 M10	50	30	6	37	20	M10	2
SERM2 60x30x1,5 M10	60	30	6	36,5	20	M10	1,5
SERM2 60x30x2 M10	60	30	5	38	20	M10	2
SERM2 60x30x2,5 M10	60	30	6	37,5	20	M10	2,5