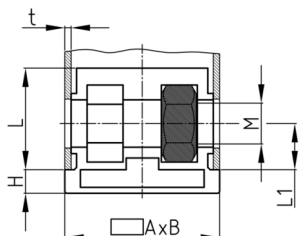


### Product Group SERM

Screw corner connectors made of PA with collar for rectangular tubes and one bright galvanized hexagon steel nut

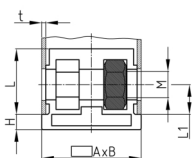


#### Standard Colours

- black

#### Material

- Base body: Polyamide (PA)
- Nut: zinc-plated steel



#### Product information

- For tubes lying on edge
- With collar for lateral tube conclusion
- The surface of the articles may vary due to production.
- Order-related production for individual article sizes! Please ask for minimum quantity.
- V = mounted for use with short screw
- DIN 985 = with lock nut made of steel, bright zinc plated
- Fixing of rollers with threaded pin in vertical standing rectangular tubes.
- Fixing of wheels or adjustable feet of horizontally lying tubes.
- Right-angled connection to trusses

#### Product options on inquiry

- Supplied with stainless steel nuts
- Special colours

Order Number	A	B	H	L	L1	M	t
	mm	mm	mm	mm	mm		mm
SERM 30x20x1,5 M8	30	20	4	37	15	M8	1,5
SERM 30x20x2 M8	30	20	4	36	15	M8	2
SERM 30x20x2 M8 DIN 985	30	20	4	37	15	M8	1,5
SERM 40x20x1,5-2 M8	40	20	2	41	30	M8	1,5-2
SERM 40x20x1,5-2 M8 DIN 985	40	20	2	41	30	M8	1,5-2
SERM 40x20x1,5-2 M8 V DIN 985	40	20	2	41	30	M8	1,5-2
SERM 40x25x1,5 M8	40	25	1,8	41	30	M8	1,5
SERM 40x30x1,5 M10	40	30	2	42	30	M10	1,5
SERM 40x30x1,5 M10 V DIN 985	40	30	2	42	30	M10	1,5
SERM 45x25x2 M10	45	25	2,5	39	20	M10	2
SERM 50x25x2 M10	50	25	2,8	32	20	M10	2
SERM 50x30x1,5 M10	50	30	2	42	30	M10	1,5
SERM 50x30x2 M10	50	30	6	31	20	M10	2
SERM 60x30x1,5 M10	60	30	6	31,5	20	M10	1,5
SERM 60x30x1,5 M10 DIN 985	60	30	6	31,5	20	M10	1,5
SERM 60x30x1,5 M10 V DIN 985	60	30	5	31,5	20	M10	1,5



# Walter Bethke GmbH & Co. KG

Technische Kunststoff - und Hybridprodukte

Order Number	A	B	H	L	L1	M	t
	mm	mm	mm	mm	mm		mm
SERM 60x30x2 M10	60	30	5	35	20	M10	2
SERM 60x30x2,5 M10	60	30	6	31,5	20	M10	2,5
SERM 60x30x2,5 M10 DIN 985	60	30	6	31,5	20	M10	2,5
SERM 60x30x2,5 M10 V DIN 985	60	30	6	31,5	20	M10	2,5
SERM 60x30x3 M10	60	30	6	31,5	20	M10	3