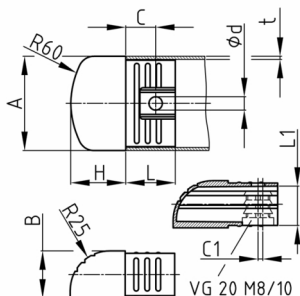


Product Group TF

Height-adjustable table feet made of PA 6 to slide in

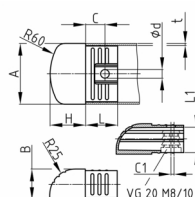


Standard Colours

- black RAL 9005

Material

- Base body: Polyamide (PA 6)



- For use as a height adjustment foot, the VG 20 M8 or M10 threaded plug is required and a 70 series set screw is recommended.
- When used as a height adjustment foot, there is a positive lock in the tube.
- When used without height adjustment, the lamella shaft ensures a good fit in the tube (customer inspection required).

Product options on inquiry

- Special colours (colours, minimum quantities, set-up costs, pricing and surcharges)

Order Number	A	B	C	C1	d	H	L	L1	t
	mm	mm	mm	mm	mm	mm	mm	mm	mm
TF 60x30x1,5	60	30	19	3	8,5	35	31,5	26	1,5