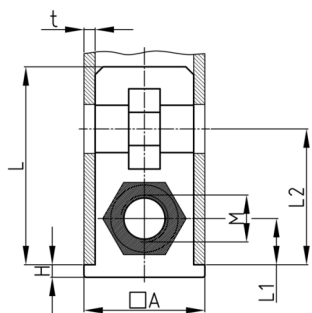


Product Group SEQM

Screw corner connectors made of PA with collar for square tubes and bright galvanized hexagon steel nut

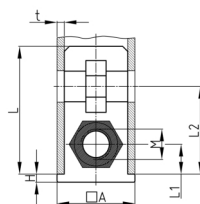


Standard Colours

- black

Material

- Base body: Polyamide (PA)
- Thread: zinc-plated steel



Product information

- With collar for lateral tube conclusion
- DIN 985 = with lock nut made of steel, bright zinc plated
- Fixing of wheels or adjustable feet of horizontally lying tubes.
- Right-angled connection to trusses
- Subsequent installation of shelf compartments in already existing constructions
- Invisible connections

Product options on inquiry

- Supplied with stainless steel nuts
- Special colours

Order Number	A	H	L	L1	L2	M	t
	mm	mm	mm	mm	mm		mm
SEQM 20x20x1,5 M8	20	2	42	10	25	M8	1,5
SEQM 20x20x2 M8	20	2	42	10	27	M8	2
SEQM 25x25x1,5 M8	25	2	43	12,5	27	M8	1,5
SEQM 25x25x1,5 M8 DIN 985	25	2	43	12,5	27	M8	1,5
SEQM 25x25x1,5 M10	25	2	42	12,5	30	M10	1,5
SEQM 30x30x1,25 M10	30	1,5	43	15	33	M10	1,25
SEQM 30x30x1,5 M8	30	4	40	15	32	M8	1,5
SEQM 30x30x2 M8	30	3	41	15	33	M8	2
SEQM 30x30x2 M10	30	2	43	15	33	M10	2