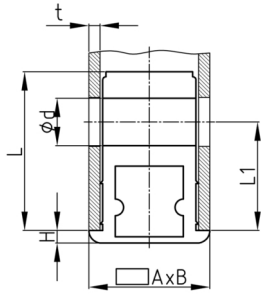


Product Group EVBR

Corner connectors made of PA with collar as roller holder at rectangular tubes

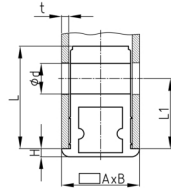


Standard Colours

- black

Material

- Base body: Polyamide (PA)



Product information

- Collar for end face pipe termination
- *) = Order related production! Please ask for minimum quantity.
- The fixings for roles with pin in vertical standing tubes
- Mounting of wheels or feet with bolt without thread on horizontally lying tubes.

Order Number	A	B	d	H	L	L1	t
	mm	mm	mm	mm	mm	mm	mm
EVBR 30x20x1,5 Ø11	30	20	11	4	37	15	1,5
EVBR 30x20x1,5 Ø12 *	30	20	12	4	37	15	1,5
EVBR 40x20x1,5 Ø10 *	40	20	10	2	41	31	1,5-2