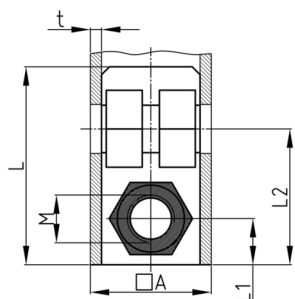


Product Group SEVVM

Screw corner connectors made of PA without collar for square tubes, with bright galvanized hexagon nut

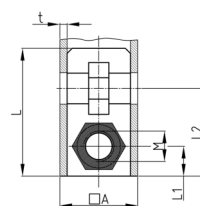
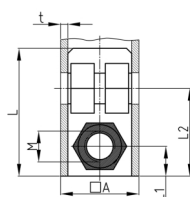


Standard Colours

- black

Material

- Base body: Polyamide (PA)
- Thread: zinc-plated steel



- Order related production! Please ask for minimum quantity.
- Fixing of wheels or adjustable feet of horizontally lying tubes.
- Right-angled connection to trusses
- Subsequent installation of shelf compartments in already existing constructions
- Invisible connections

| Order Number | A | L | L1 | L2 | M | WAF | t | Type |
|----------------|----|----|----|------|-----|-----|----|------|
| | mm | mm | mm | mm | | mm | mm | |
| SEVVM 20X1 M8 | 20 | 42 | 27 | 10 | M8 | 13 | 1 | 2 |
| SEVVM 25x2 M8 | 25 | 43 | 28 | 12,5 | M8 | 13 | 2 | 1 |
| SEVVM 30x2 M10 | 30 | 40 | 33 | 15 | M10 | 17 | 2 | 1 |