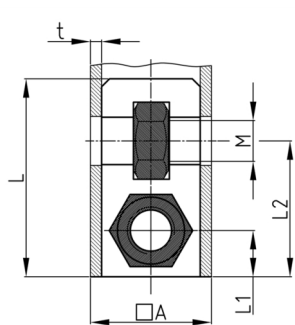


### Product Group SEVVM2

Screw corner connectors made of PA without collar for square tubes, with two bright galvanized hexagon nuts

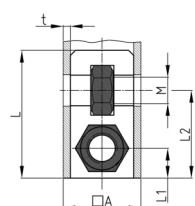


#### Standard Colours

- black

#### Material

- Base body: Polyamide (PA)
- Thread: zinc-plated steel



- Order related production! Please ask for minimum quantity.
- Fixing of wheels or adjustable feet of horizontally lying tubes.
- Right-angled connection to trusses
- Subsequent installation of shelf compartments in already existing constructions
- Invisible connections

Order Number	A	L	L1	L2	M	t
	mm	mm	mm	mm		mm
SEVVM2 20x1 M8	20	42	27	10	M8	1
SEVVM2 25x2 M8	25	43	28	12,5	M8	2