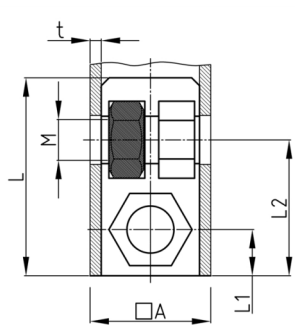


### Product Group SEVVMH

Screw corner connectors made of PA without collar for square tubes, with bright galvanized hexagon nut (rear)

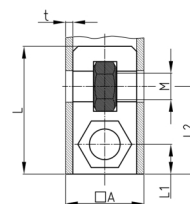
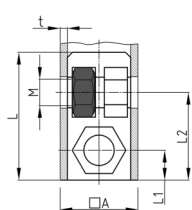


#### Standard Colours

- black

#### Material

- Base body: Polyamide (PA)
- Thread: zinc-plated steel



- Order related production! Please ask for minimum quantity.
- Fixing of wheels or adjustable feet of horizontally lying tubes.
- Right-angled connection to trusses
- Subsequent installation of shelf compartments in already existing constructions
- Invisible connections

| Order Number    | A  | L  | L1 | L2   | M   | WAF | t  | Type |
|-----------------|----|----|----|------|-----|-----|----|------|
|                 | mm | mm | mm | mm   |     | mm  | mm |      |
| SEVVMH 20x1 M8  | 20 | 42 | 27 | 10   | M8  | 13  | 1  | 2    |
| SEVVMH 25x2 M8  | 25 | 43 | 28 | 12,5 | M8  | 13  | 2  | 1    |
| SEVVMH 30x2 M10 | 30 | 40 | 33 | 15   | M10 | 17  | 2  | 1    |