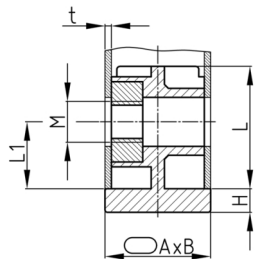


### Product Group SVBOM

Screw corner connectors with collar made of PA for oval tubes and bright galvanized hexagon nut

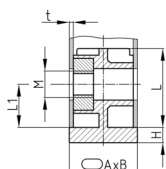


#### Standard Colours

- black

#### Material

- Base body: Polyamide (PA)
- Thread: zinc-plated steel



#### Product information

- For tubes lying flat
- Collar for end face pipe termination
- Order-related production for individual article sizes! Please ask for minimum quantity.
- DIN 985 = with lock nut made of steel, bright zinc plated
- Fixing of wheels or adjustable feet of horizontally lying tubes.

Order Number	A	B	H	L	L1	M	t
	mm	mm	mm	mm	mm		mm
SVBOM 30x15x1,5 M8	30	15	5	30	15	M8	1,5
SVBOM 50x25x2 M8	50	25	5	36	22	M8	2
SVBOM 50x25x2 M8 DIN 985	50	25	5	36	22	M8	2
SVBOM 50x25x2 M10	50	25	5	36	22	M10	2
SVBOM 60x30x2 M10	60	30	5	36	22	M10	2