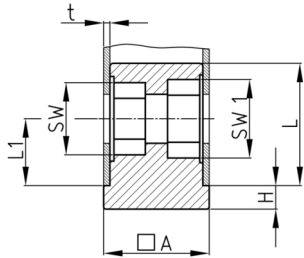


### Product Group SVBV

Screw corner connectors made of PA with collar for square tubes, hexagon nuts inserted

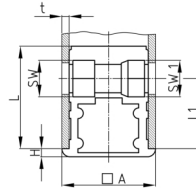
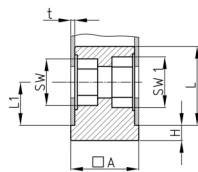


#### Standard Colours

- black

#### Material

- Base body: Polyamide (PA)



#### Product information

- Collar for end face pipe termination
- DIN 6926 = lock nut with collar made of steel, bright zinc plated
- SO (= special design): the nut chambers are designed for a hexagon nut DIN 934 and a lock nut DIN 985.
- Fixing of wheels or adjustable feet of horizontally lying tubes.
- Right-angled connection to trusses

Order Number	A	H	L	L1	WAF	SW1	t
	mm	mm	mm	mm	mm	mm	mm
SVBV 40x2 M10/M12 DIN 6926	40	5	40	25	15	18	2
SVBV 50x2,5 M10 SO	50	2,5	61	50	17	17	2,5