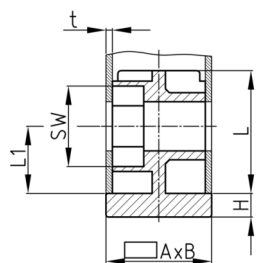


Product Group SVF

Screw corner connectors made of PA with collar for rectangular tubes, hexagon nut inserted (Order-related production! Please ask for minimum quantity)

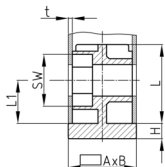


Standard Colours

- black

Material

- Base body: Polyamide (PA)



Product information

- For tubes lying flat
- With collar for lateral tube conclusion
- Order related production! Please ask for minimum quantity.
- Fixing of wheels or adjustable feet of horizontally lying tubes.

| Order Number | A | B | H | L | L1 | WAF | t |
|-----------------|----|----|-----|----|----|-----|----|
| | mm | mm | mm | mm | mm | mm | mm |
| SVF 30x20x2 M8 | 30 | 20 | 2,5 | 37 | 51 | 13 | 2 |
| SVF 50x25x2 M10 | 50 | 25 | 5 | 36 | 22 | 17 | 2 |