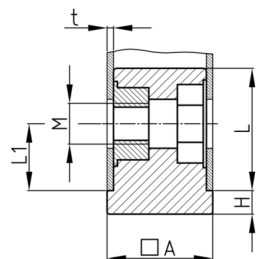


Product Group SVBVM

Screw corner connectors made of PA with collar for square tubes with hexagon nut

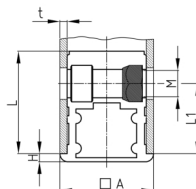
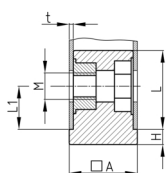


Standard Colours

- black

Material

- Base body: Polyamide (PA)
- Thread: zinc-plated steel



Product information

- Collar for end face pipe termination
- DIN 6926 = lock nut with collar made of steel, bright zinc plated
- DIN 985 = with lock nut made of steel, bright zinc plated
- DIN 934 = with nut made of steel, bright zinc plated
- Fixing of wheels or adjustable feet of horizontally lying tubes.
- Right-angled connection to trusses

Order Number	A	H	L	L1	M	t
	mm	mm	mm	mm		mm
SVBVM 40x2 M10 DIN 6926	40	5	40	25	M10	2
SVBVM 40x2 M12 DIN 6926	40	5	40	25	M12	2
SVBVM 50x2,5 M10 DIN 934	50	2,5	61	50	M10	2,5
SVBVM 50x2,5 M10 DIN 985	50	2,5	61	50	M10	2,5