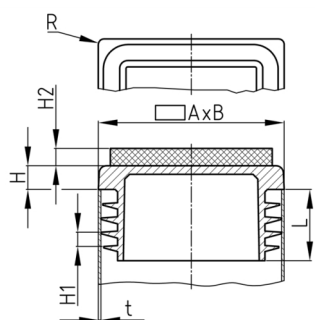


### Product Group VLAf/R

Lamella plugs made of polyethylene for rectangular tubes with welded felt

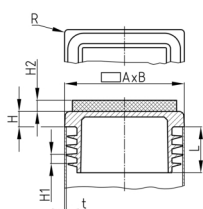


#### Standard Colours

- black RAL 9005

#### Material

- Base body: Polyethylene (PE)
- Slide base: synthetic needle felt (polyester)



#### Product information

- Lamellar plugs without specification of the pipe wall thickness are generally suitable for pipe wall thicknesses 1.5 - 2 mm. Please indicate the pipe wall thickness when ordering.
- The plugs are intended for use in pipes or equivalent bores with free passage corresponding to the clear nominal width of at least shaft length.
- For technical production reasons, a residual sprue may exceed the shaft length.
- Material and design of shafts guaranteed stop against drop out and easy assembling.
- The ribs are circularly closed or interrupted.
- The ribs are not suitable for sealing against fluids.

#### Product options on inquiry

- Special colours (colours, minimum quantities, set-up costs, pricing and surcharges)

Order Number	A	B	H	H1	H2	L	R	t
	mm	mm	mm	mm	mm	mm	mm	mm
VLAf 20x10	20	10	3	3	3,5	11,5		0,8-2
VLAf 20x15	20	15	5	3	3,5	11,5		1-2
VLAf 25x20	25	20	5	3	3,5	11,5		1-3
VLAf 30x10	30	10	3	3	3,5	11,5		0,8-2
VLAf 30x15	30	15	5	3	3,5	11,5		0,8-2,5
VLAf 35x10	35	10	5	3	3,5	11,5		0,8-2
VLAf 35x15	35	15	5	3	3,5	11,5		1-3
VLAf 40x10	40	10	5	3	3,5	11	1,5	1,5-2
VLAf 40x15	40	15	5	3	3,5	11,7	1,5	1-2
VLAf 40x30	40	30	5	3	3,5	11,5	2	1-3
VLAf 100x30	100	30	5	3	3,5	14,5	2	1,5-3,5
VLAf 100x40	100	40	5	3	3,5	14,5	2	1,5-3,5