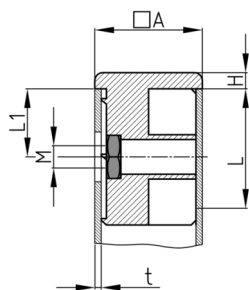


Product Group SVOQ

Screw corner connectors made of PE with collar for square tubes and assembled hexagon nut

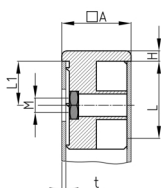


Standard Colours

- black

Material

- Base body: Polyethylene (PE)
- Nut: zinc-plated steel



- The load capacity of the connections is highly dependent on the condition of the pipes (weld seams, roughness, tolerances) as well as the foot/thread used. We therefore recommend carrying out your own tests to determine the values.

Order Number	A	H	L	L1	M	t
	mm	mm	mm	mm		mm
SVOQ 20X20X1,5 M6	20	5	30	20	M6	1,5
SVOQ 20X20X1,5 M8	20	5	30	20	M8	1,5
SVOQ 25X25X1 M8	25	5	33	20	M8	1
SVOQ 25X25X1 M10	25	5	33	20	M10	1
SVOQ 25X25X1,5 M8	25	5	33	20	M8	1,5
SVOQ 25X25X1,5 M10	25	5	33	20	M10	1,5