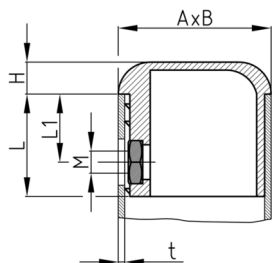


Product Group SVORB

Screw corner connectors with collar made of PP for rectangular tubes and assembled hexagon nut

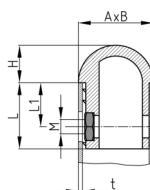
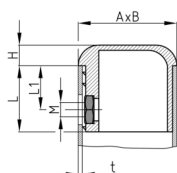


Standard Colours

- black

Material

- Base body: Polypropylene (PP)
- Nut: zinc-plated steel



- The load capacity of the connections is highly dependent on the condition of the pipes (weld seams, roughness, tolerances) as well as the foot/thread used. We therefore recommend carrying out your own tests to determine the values.
- L = nut alongside

Order Number	A	B	H	L	L1	M	t
	mm	mm	mm	mm	mm		mm
SVORB 30x50x2 M10 L	30	50	15	35	25	M10	2
SVORB 30x60x2 M10 L	30	60	15	35	25	M10	2
SVORB 50x30x1,5 M10	50	30	15	35	25	M10	1,5
SVORB 50x30x1,5 M8	50	30	15	35	25	M8	1,5
SVORB 50x30x2 M10	50	30	15	35	25	M10	2
SVORB 60x30x2 M10	60	30	15	35	25	M10	2