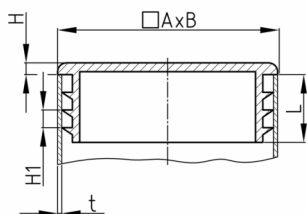


Product Group VSFL/RE

Lamella plugs made of PE with cover plate 2 mm for rectangular tubes

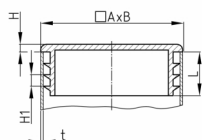
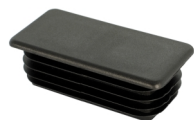


Standard Colours

- black RAL 9005

Material

- Polyethylene (PE)



Product information

- The plugs are intended for use in pipes or equivalent bores with free passage corresponding to the clear nominal width of at least shaft length.
- For technical production reasons, a residual sprue may exceed the shaft length.
- Lamellar plugs without specification of the pipe wall thickness are generally suitable for pipe wall thicknesses 1.5 - 2 mm. Please indicate the pipe wall thickness when ordering.
- Material and design of shafts guaranteed stop against drop out and easy assembling.
- Depending on the selected article, the surface finish can vary between polished and eroded.
- The ribs are circularly closed or interrupted.
- They are not suitable for sealing against fluids.
- The number of slats per plug varies between 2-4 slats.

Product options on inquiry

- Special colours (colours, minimum quantities, set-up costs, pricing and surcharges)
- With your engraved company logo (tooling costs, minimum quantities, set-up costs)
- With your tampon printed company logo (set-up costs, minimum quantities, printing costs)

| Order Number | A | B | H | H1 | L | t |
|--------------------|----|----|----|----|------|---------|
| | mm | mm | mm | mm | mm | mm |
| VSFL 20x15x1-2 | 20 | 15 | 2 | 3 | 11,5 | 1-2 |
| VSFL 25x15x0,8-2,5 | 25 | 15 | 2 | 3 | 11,5 | 0,8-2,5 |
| VSFL 25x20x1-2,5 | 25 | 20 | 2 | 3 | 11,5 | 1-2,5 |
| VSFL 30x15x0,8-2,5 | 30 | 15 | 2 | 3 | 11,5 | 0,8-2,5 |
| VSFL 30x20x0,8-3 | 30 | 20 | 2 | 3 | 11,5 | 0,8-3 |
| VSFL 30x25x0,8-3 | 30 | 25 | 2 | 3 | 11,5 | 0,8-3 |
| VSFL 35x20x0,8-2,5 | 35 | 20 | 2 | 3 | 11,5 | 0,8-2,5 |
| VSFL 35x25x0,8-2,5 | 35 | 25 | 2 | 3 | 11,5 | 0,8-2,5 |
| VSFL 40x20x0,8-2,5 | 40 | 20 | 2 | 3 | 11,5 | 0,8-2,5 |
| VSFL 40x25x1-3 | 40 | 25 | 2 | 3 | 11,5 | 1-3 |
| VSFL 40x30x1-2,5 | 40 | 30 | 2 | 3 | 11,5 | 1-2,5 |
| VSFL 45x25x0,8-2,5 | 45 | 25 | 2 | 3 | 11,5 | 0,8-2,5 |
| VSFL 45x30x0,8-2,5 | 45 | 30 | 2 | 3 | 11,5 | 0,8-2,5 |
| VSFL 50x20x0,8-2,5 | 50 | 20 | 2 | 3 | 14,5 | 0,8-2,5 |
| VSFL 50x25x0,8-2,5 | 50 | 25 | 2 | 3 | 14,5 | 0,8-2,5 |



Walter Bethke GmbH & Co. KG

Technische Kunststoff - und Hybridprodukte

| Order Number | A | B | H | H1 | L | t |
|---------------------|-----|----|----|----|------|---------|
| | mm | mm | mm | mm | mm | mm |
| VSFL 50x30x1-2,5 | 50 | 30 | 2 | 3 | 14,5 | 1-2,5 |
| VSFL 50x40x0,8-2,5 | 50 | 40 | 2 | 3 | 14,5 | 0,8-2,5 |
| VSFL 60x20x1-2,5 | 60 | 20 | 2 | 3 | 14,5 | 1-2,5 |
| VSFL 60x25x0,8-2,5 | 60 | 25 | 2 | 3 | 14,5 | 0,8-2,5 |
| VSFL 60x30x1-2,5 | 60 | 30 | 2 | 3 | 14,5 | 1-,25 |
| VSFL 60x40x1-2,5 | 60 | 40 | 2 | 3 | 14,5 | 1-2,5 |
| VSFL 100x20x1,5-2,5 | 100 | 20 | 2 | 3 | 14,5 | 1,5-2,5 |
| VSFL 100x25x1,5-2,5 | 100 | 25 | 2 | 3 | 14,5 | 1,5-2,5 |
| VSFL 100x30x1,5-3 | 100 | 30 | 2 | 3 | 14,5 | 1,5-3 |
| VSFL 110x30x2-3,5 | 110 | 30 | 2 | 3 | 14,5 | 2-3,5 |
| VSFL 120x20x1,5-2,5 | 120 | 20 | 2 | 3 | 14,5 | 1,5-2,5 |
| VSFL 120x25x1,5-3 | 120 | 25 | 2 | 3 | 14,5 | 1,5-3 |
| VSFL 120x30x1-2 | 120 | 30 | 2 | 3 | 14,5 | 1-2 |
| VSFL 200x40x2-3,5 | 200 | 40 | 2 | 4 | 19 | 2-3,5 |