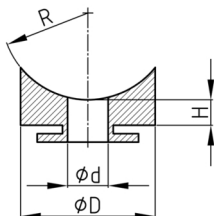


Product Group EVDRAD

Saddle distance sleeve made of PA 6 with radius and fixing ring for use with series EVRUx

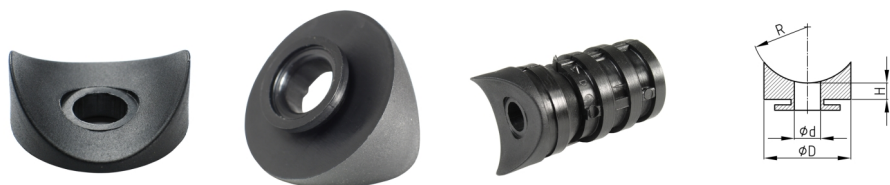


Standard Colours

- black

Material

- Base body: Polyamide (PA 6)



Product information

- Compatible with Expander connector series EVRUx with M8 thread and adapter for this saddle spacer.
- Round tubes of different diameters can be screwed together at right angles.
- The saddle spacers are in the connectors rotatable mounted.

Order Number	D	d	H	R
	mm	mm	mm	mm
EVDRAD M 8 / 21 R 10,5	21	8,2	2	10,5
EVDRAD M 8 / 22 R13,5	22	8,2	2	13,5
EVDRAD M 8 / 27 R13,5	27	8,2	2	13,5
EVDRAD M 8 / 33,5 R 16,75	33,5	8,2	2	16,75
EVDRAD M 8 / 40 R 20	40	8,2	2	20