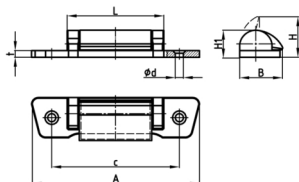


Product Group SGKG

Tray handle made of glass fibre-reinforced polyamide, for fastening with countersunk screws



Standard Colours

- black

Material

- Base body: glass fibre reinforced polyamide (PA-GF)



- F = recuperating spring

| Order Number | A | B | c | d | H | H1 | L | t |
|----------------|-----|----|-----|-----|----|----|----|----|
| | mm | mm | mm | mm | mm | mm | mm | mm |
| SGKG 122 / 4 | 122 | 24 | 108 | 3,2 | 24 | 13 | 86 | 3 |
| SGKG 122 / 4 F | 122 | 24 | 108 | 3,2 | 24 | 13 | 86 | 3 |