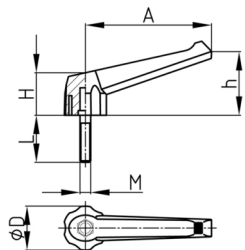


Product Group KLH11B

Clamping lever with threaded bolt

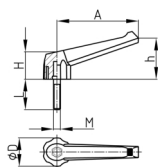


Standard Colours

- black

Material

- Base body: Polyamide (PA 6)
- Thread bolt: zinc-plated steel



Order Number	A	D	H	h	L	M
	mm	mm	mm	mm	mm	
KLH11B 60 / M8x15	60	21	23	32	15	M8
KLH11B 60 / M8x20	60	21	23	32	20	M8
KLH11B 60 / M8x25	60	21	23	32	25	M8
KLH11B 60 / M8x30	60	21	23	32	30	M8
KLH11B 60 / M8x35	60	21	23	32	35	M8
KLH11B 60 / M8x40	60	21	23	32	40	M8
KLH11B 80 / M8x15	80	30	28	42	15	M8
KLH11B 80 / M8x20	80	30	28	42	20	M8
KLH11B 80 / M8x25	80	30	28	42	25	M8
KLH11B 80 / M8x30	80	30	28	42	30	M8
KLH11B 80 / M8x35	80	30	28	42	35	M8
KLH11B 80 / M8x40	80	30	28	42	40	M8
KLH11B 80 / M10x15	80	30	28	42	15	M10
KLH11B 80 / M10x20	80	30	28	42	20	M10
KLH11B 80 / M10x25	80	30	28	42	25	M10
KLH11B 80 / M10x30	80	30	28	42	30	M10
KLH11B 80 / M10x35	80	30	28	42	35	M10
KLH11B 80 / M10x40	80	30	28	42	40	M10