

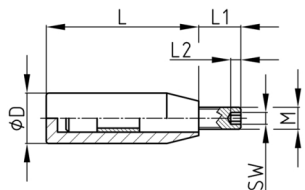


Walter Bethke GmbH & Co. KG

Technische Kunststoff - und Hybridprodukte

Product Group DZGH

Revolving handle made of PA-GF with hexagon socket in threaded bolt

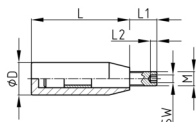


Standard Colours

- black

Material

- Base body: glass fibre reinforced polyamide (PA-GF)
- Thread: zinc-plated steel



Order Number	D	L	L1	L2	M	WAF
	mm	mm	mm	mm		mm
DZGH 18 / M6	18	46	12	4	M6	3
DZGH 20 / M8	20	65	12	4	M8	4
DZGH 24 / M10	24	77	15	4	M10	4
DZGH 28 / M12	28	88	20	4	M12	4