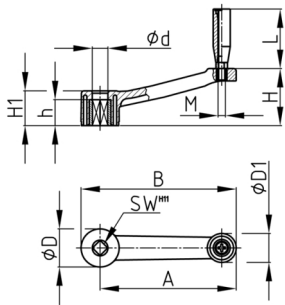


Product Group HKRQ

Crank-handle made of PA-GF with revolving handle, hub with square through hole

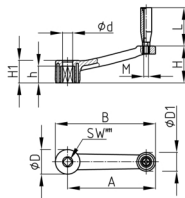


Standard Colours

- black

Material

- Base body: glass fibre reinforced polyamide (PA-GF)
- Hub: zinc-plated steel



| Order Number | A | B | D | d | D1 | H | h | H1 | L | M | SW H11 |
|------------------|-----|-----|----|----|----|----|----|----|----|----|--------|
| | mm | mm | mm | mm | mm | mm | mm | mm | mm | | mm |
| HKRQ 128 / 10x10 | 128 | 151 | 45 | 18 | 53 | 60 | 27 | 42 | 72 | M8 | 10 |
| HKRQ 128 / 12x12 | 128 | 151 | 45 | 18 | 35 | 60 | 27 | 42 | 72 | M8 | 12 |
| HKRQ 128 / 14x14 | 128 | 151 | 45 | 18 | 35 | 60 | 27 | 42 | 72 | M8 | 14 |
| HKRQ 148 / 12x12 | 148 | 171 | 45 | 18 | 35 | 65 | 27 | 42 | 72 | M8 | 12 |
| HKRQ 148 / 14x14 | 148 | 171 | 45 | 18 | 35 | 65 | 27 | 42 | 72 | M8 | 14 |
| HKRQ 148 / 17x17 | 148 | 171 | 45 | 18 | 35 | 65 | 27 | 42 | 72 | M8 | 17 |