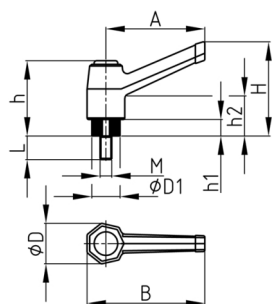


Product Group KLH4B

Clamping lever made of PA-GF with threaded bolt, adjustable with push button

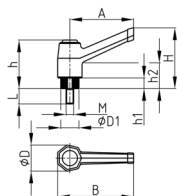


Standard Colours

- black

Material

- Base body: glass fibre reinforced polyamide (PA-GF)
- Thread bolt: zinc-plated steel
- Push button: Polyamide (PA)



A	B	D	D1	H	h	h1	h2	M	10	15	20	25	30	40	50	60
mm	mm	mm	mm	mm	mm	mm	mm		mm	mm	mm	mm	mm	mm	mm	mm
40	50	17	12	42	33	7	15	M5	x		x		x			
40	50	17	12	42	33	7	15	M6		x	x	x	x			
40	50	17	12	42	33	7	15	M8		x			x			
60	70	22	15	42	37	8	14	M6		x	x	x	x	x	x	
60	70	22	15	42	37	8	14	M8		x	x		x	x	x	x
60	70	22	15	42	37	8	14	M10			x		x	x	x	
80	95	27	19	59	49	9	20	M10			x		x	x	x	x
80	95	27	19	59	49	9	20	M12			x		x	x	x	
100	117	38	25	85	60	12	20	M12					x	x	x	
100	117	38	25	85	60	12	20	M14					x	x	x	
100	117	38	25	85	60	12	20	M16					x	x	x	

Ordering example

- Group + A + M + Thread Length ---> KLH4B - 40 M8x 30