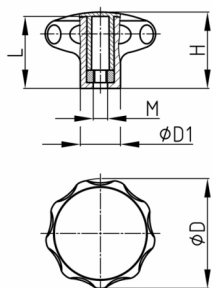


### Product Group STGRM

Star knobs (similar DIN 6336) made of PA 6 with nut, three-part assembled



#### Standard Colours

- black RAL 9005

#### Material

- Base body: Polyamide (PA 6)
- Thread: zinc-plated steel
- Nut: zinc-plated steel



#### Product information

- The three-part assembly fits tight and is not provided for disassembling.

#### Product options on inquiry

- Special colours according to RAL-System
- Two coloured (cover + body) according to RAL-System
- With company logo/lettering in the lid (raised)
- With your tampon printed company logo (set-up costs, minimum quantities, printing costs)
- With stainless steel or plastic nuts
- With special nuts

Order Number	D	D1	H	L	M
	mm	mm	mm	mm	
STGRM 40 M6	40	19	26	22	M6
STGRM 40 M8	40	19	26	22	M8
STGRM 50 M6	50	18	35	30	M6
STGRM 50 M8	50	18	35	30	M8
STGRM 50 M10	50	23	35	30	M10
STGRM 63 M8	63	23	40	36	M8
STGRM 63 M10	63	23	40	36	M10
STGRM 80 M10	80	25	52	48	M10
STGRM 80 M12	80	25	52	48	M12