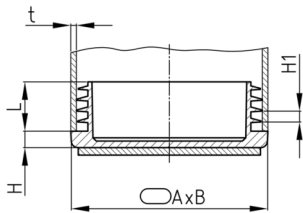


Product Group OVLAF

Stacking chair glides made of PE with felt gliding surface

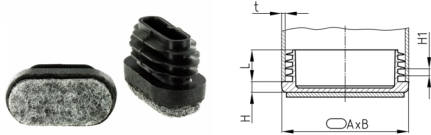


Standard Colours

- black RAL 9005

Material

- Base body: Polyethylene (PE)
- Slide base: synthetic needle felt (polyester)



Product information

- For technical production reasons, a residual sprue may exceed the shaft length.
- Material and design of shafts guaranteed stop against drop out and easy assembling.
- The ribs are circularly closed or interrupted.
- For a sufficiently smooth running mounting in tubes with larger wall thicknesses, it is recommended to chamfer the inside diameter of the tube (approx. $0.3 - 0.5 \times 60^\circ$).

Order Number	A	B	H	H1	L	t
	mm	mm	mm	mm	mm	mm
OVLAF 30x15x1-2,5	30	15	5	3	11,5	1-2,5
OVLAF 35x15x0,8-2,5	35	15	5,5	3,5	11,5	0,8-2,5
OVLAF 35x20x1-3	35	20	5	3	11,5	1-3
OVLAF 40x20x0,8-3	40	20	5	3	11,5	0,8-3
OVLAF 50x20x1-3	50	20	5	3	11,5	1-3