

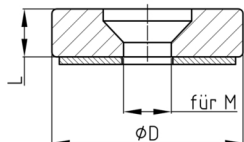


Walter Bethke GmbH & Co. KG

Technische Kunststoff - und Hybridprodukte

Product Group PRAF/PVC

Slide washers made of soft PVC with welded felt and boring for fastening with 90°-countersunk screws

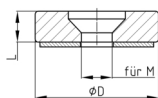


Standard Colours

- black RAL 9005

Material

- Base body: plasticised PVC (PVC-P)
- Slide base: synthetic needle felt (polyester)



| Order Number | D | L | for WAF |
|----------------------|----|----|---------|
| | mm | mm | |
| PRAF 25x10 M5/M6 PVC | 25 | 10 | M5/M6 |
| PRAF 30x10 M5/M6 PVC | 30 | 10 | M5/M6 |
| PRAF 40x10 M6 PVC | 40 | 10 | M6 |
| PRAF 40x10 M8 PVC | 40 | 10 | M8 |
| PRAF 40x10 M10 PVC | 40 | 10 | M10 |