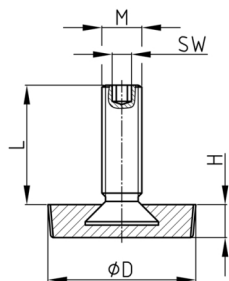


### Product Group 70 ISK

Adjusting screws with knurled plastic base made of PA and hexagon inside the thread end, thread bolt overmoulded

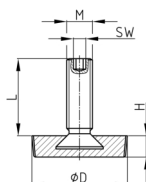


#### Standard Colours

- black

#### Material

- Thread: zinc-plated steel
- Base: Polyamide (PA)



#### Product information

- Foot-Ø 25 - 44 mm with solid installation surface
- Base-Ø 60 mm with recess

#### Product options on inquiry

- Additional sizes
- Stainless steel screws
- Plastic base in special colours according to RAL-System

Order Number	D	H	L	M	WAF
	mm	mm	mm		mm
70-25 / M10x25 ISK	25	6	19	M10	4
70-25 / M10x30 ISK	25	6	24	M10	4
70-25 / M10x40 ISK	25	6	34	M10	4
70-25 / M10x50 ISK	25	6	44	M10	4
70-25 / M10x60 ISK	25	6	54	M10	4
70-29 / M10x25 ISK	29	7	19	M10	4
70-29 / M10x30 ISK	29	7	24	M10	4
70-29 / M10x40 ISK	29	7	34	M10	4
70-29 / M10x50 ISK	29	7	44	M10	4
70-29 / M10x60 ISK	29	7	54	M10	4
70-32 / M10x25 ISK	32	8	19	M10	4
70-32 / M10x30 ISK	32	8	24	M10	4
70-32 / M10x40 ISK	32	8	34	M10	4
70-32 / M10x50 ISK	32	8	44	M10	4
70-32 / M10x60 ISK	32	8	54	M10	4
70-38 / M10x25 ISK	38	9	19	M10	4
70-38 / M10x30 ISK	38	9	24	M10	4
70-38 / M10x40 ISK	38	9	34	M10	4
70-38 / M10x50 ISK	38	9	44	M10	4
70-38 / M10x60 ISK	38	9	54	M10	4
70-44 / M10x25 ISK	44	10	19	M10	4



# Walter Bethke GmbH & Co. KG

Technische Kunststoff - und Hybridprodukte

Order Number	D mm	H mm	L mm	M	WAF mm
70-44 / M10x30 ISK	44	10	24	M10	4
70-44 / M10x40 ISK	44	10	34	M10	4
70-44 / M10x50 ISK	44	10	44	M10	4
70-44 / M10x60 ISK	44	10	54	M10	4
70-60 / M10x25 ISK	60	10	19	M10	4
70-60 / M10x30 ISK	60	10	24	M10	4
70-60 / M10x40 ISK	60	10	34	M10	4
70-60 / M10x50 ISK	60	10	44	M10	4
70-60 / M10x60 ISK	60	10	54	M10	4