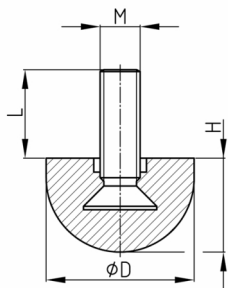


### Product Group 92PA

Adjusting screws with hemispherical plastic base made of PA

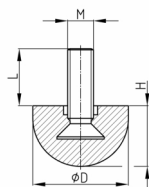


#### Standard Colours

- black

#### Material

- Base body: Polyamide (PA)
- Thread: zinc-plated steel



#### Product options on inquiry

- Further thread lengths/sizes
- Special colours according to RAL-System

| Order Number     | D  | H  | L    | M   |
|------------------|----|----|------|-----|
|                  | mm | mm | mm   |     |
| 92- 20 M8x16 PA  | 20 | 17 | 8,5  | M8  |
| 92- 20 M8x20 PA  | 20 | 17 | 12   | M8  |
| 92- 20 M8x25 PA  | 20 | 17 | 18   | M8  |
| 92- 20 M8x30 PA  | 20 | 17 | 23   | M8  |
| 92- 25 M8x16 PA  | 25 | 12 | 12,5 | M8  |
| 92- 25 M8x20 PA  | 25 | 12 | 17   | M8  |
| 92- 25 M8x25 PA  | 25 | 12 | 22   | M8  |
| 92- 25 M8x30 PA  | 25 | 12 | 27   | M8  |
| 92- 25 M8x40 PA  | 25 | 12 | 37   | M8  |
| 92- 32 M10x20 PA | 32 | 16 | 16   | M10 |
| 92- 32 M10x25 PA | 32 | 16 | 21   | M10 |
| 92- 32 M10x30 PA | 32 | 16 | 26   | M10 |
| 92- 32 M10x40 PA | 32 | 16 | 36   | M10 |
| 92- 32 M10x50 PA | 32 | 16 | 46   | M10 |