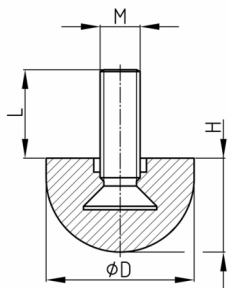


Product Group 92TPE

Zinc-plated adjustable screws with hemispherical plastic base made of TPE

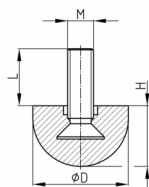


Standard Colours

- black

Material

- Base body: elastic thermoplast (TPE)
- Thread: zinc-plated steel



Product options on inquiry

- Further thread lengths/sizes
- Special colours according to RAL-System

Order Number	D	H	L	M
	mm	mm	mm	
92- 20 M8x16 TPE	20	17	8,5	M8
92- 20 M8x20 TPE	20	17	12	M8
92- 20 M8x25 TPE	20	17	17	M8
92- 20 M8x30 TPE	20	17	23	M8