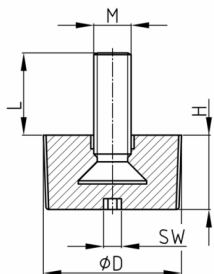


Product Group 70H

Adjusting screws with high knurled plastic base made of PA, thread bolt overmoulded

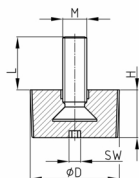


Standard Colours

- black

Material

- Base body: Polyamide (PA)
- Thread: zinc-plated steel



Product options on inquiry

- Further thread lengths/sizes
- Stainless steel screws
- Plastic base in special colours according to RAL-System

Order Number	D	H	L	M	WAF
	mm	mm	mm		mm
70- 20 M6x20 H	19	12	12	M6	4
70- 20 M6x25 H	19	12	17	M6	4
70- 20 M6x30 H	19	12	22	M6	4
70- 20 M6x40 H	19	12	32	M6	4
70- 20 M6x50 H	19	12	42	M6	4
70- 25 M6x20 H	24	12	12	M6	4
70- 25 M6x25 H	24	12	17	M6	4
70- 25 M6x30 H	24	12	22	M6	4
70- 25 M6x40 H	24	12	32	M6	4
70- 25 M6x50 H	24	12	42	M6	4