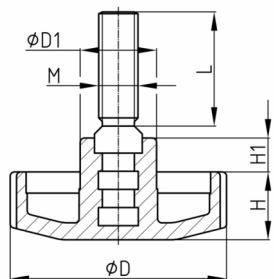


Product Group VZF

Hand wheels made of PA with overmoulded threaded bolt

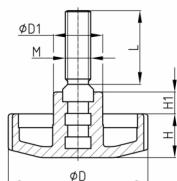


Standard Colours

- black

Material

- Base body: Polyamide (PA)
- Thread: zinc-plated steel



Order Number	D	D1	H	H1	L	M
	mm	mm	mm	mm	mm	
VZF 50 / M10x20	50	18	16	8	20	M10
VZF 50 / M10x25	50	18	16	8	25	M10
VZF 50 / M10x30	50	18	16	8	30	M10