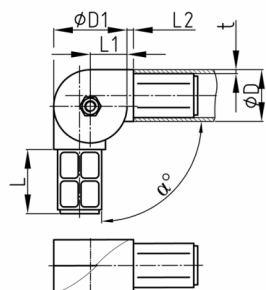


Product Group KGV/R

Two-way push-in connector made of PA 6.6 with joint for round tube

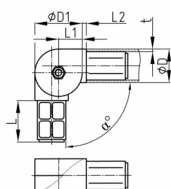


Standard Colours

- black

Material

- Base body: Polyamide (PA 6)
- Screw: zinc-plated steel
- Nut: zinc-plated steel



Product information

- The specified adjustment range can be infinitely adjusted.
- Delivery is completely assembled.

Order Number	α	D	D1	L	L1	L2	t
	$^\circ$	mm	mm	mm	mm	mm	mm
KGV 30x2	45-200	30	45	41	22,5	4	2