

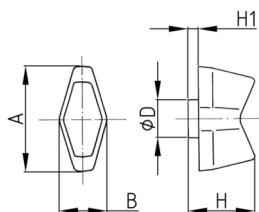


# Walter Bethke GmbH & Co. KG

Technische Kunststoff - und Hybridprodukte

**Product Group** BA 32

Wing nuts made of PA 6 with threaded bush (overmoulded)

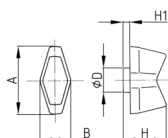


### Standard Colours

- black

### Material

- Base body: Polyamide (PA 6)
- Thread: Brass



Order Number	A	B	D	H	H1	M
	mm	mm	mm	mm	mm	
BA 32 M6	32	14	13	18	2	M6