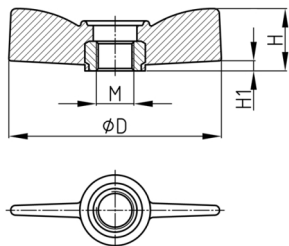




Product Group BL

Wing nuts made of PA with threaded bush (overmoulded)

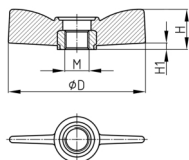


Standard Colours

- black

Material

- Base body: Polyamide (PA)
- Thread: zinc-plated steel



Order Number	D	H	H1	M
	mm	mm	mm	
BL 60 M6	60	20	2,5	M6
BL 60 M8	60	20	2,5	M8