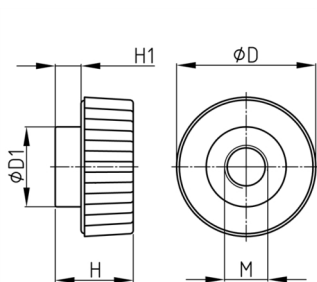


Product Group BG 22

Knurled nuts made of PA 6 with threaded bush (overmoulded)

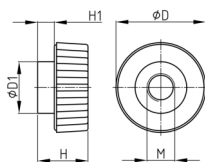


Standard Colours

- black

Material

- Base body: Polyamide (PA 6)
- Thread: zinc-plated steel



Order Number	D	D1	H	H1	M
	mm	mm	mm	mm	
BG 22 M5	22	12	14	3,5	M5
BG 22 M6	22	12	14	3,5	M6