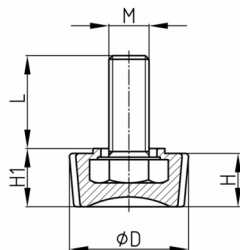


### Product Group SES

Heptagon screws made of PA with threaded bolt (overmoulded)

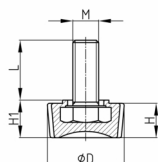


#### Standard Colours

- black

#### Material

- Base body: Polyamide (PA)
- Thread: zinc-plated steel



Order Number	D	H	H1	L	M
	mm	mm	mm	mm	
SES 20 M5x10	20	9,5	10	10	M5
SES 20 M5x14	20	9,5	10	14	M5
SES 20 M5x18	20	9,5	10	18	M5
SES 20 M5x23	20	9,5	10	23	M5
SES 20 M5x28	20	9,5	10	28	M5
SES 20 M5x33	20	9,5	10	33	M5
SES 20 M6x12	20	9,5	10	12	M6
SES 20 M6x14	20	9,5	10	14	M6
SES 20 M6x20	20	9,5	10	20	M6
SES 20 M6x23	20	9,5	10	23	M6
SES 20 M6x28	20	9,5	10	28	M6
SES 20 M6x33	20	9,5	10	33	M6
SES 20 M6x38	20	9,5	10	38	M6
SES 20 M6x43	20	9,5	10	43	M6