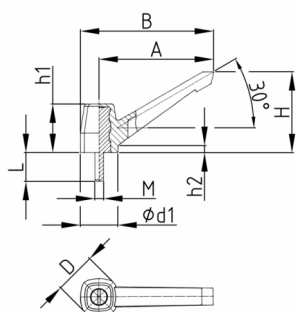


Product Group KLH2B

Clamping lever made of PA-GF with overmoulded threaded bolt

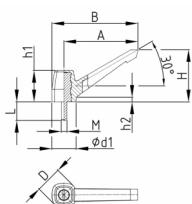


Standard Colours

- black

Material

- Base body: glass fibre reinforced polyamide (PA-GF)
- Thread: zinc-plated steel



Order Number	A	B	d1	D	h1	h2	H	L	M
	mm	mm	mm	mm	mm	mm	mm	mm	mm
KLH2B 40 M6x15	40	49	16	18	22	9	38	15	M6
KLH2B 55 M8x25	55	65	20	22	23	8	49	25	M8
KLH2B 55 M8x40	55	65	20	22	23	8	49	40	M8
KLH2B 79 M10x30	80	93	27	29	32	8	68	30	M10
KLH2B 79 M10x50	80	93	27	29	32	8	68	50	M10
KLH2B 100 M12x50	100	117	33	38	44	12	85	50	M12