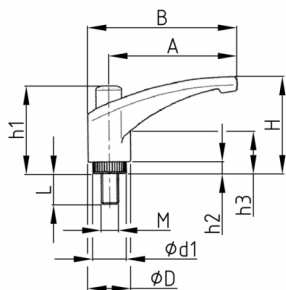


### Product Group K LH3B

Clamping lever made of PA-GF with overmoulded threaded bolt, adjustable with push button

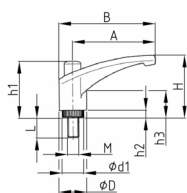


#### Standard Colours

- black

#### Material

- Base body: glass fibre reinforced polyamide (PA-GF)
- Thread: zinc-plated steel



A	B	d1	D	h1	h2	h3	H	M	10	12	16	20	25	30	35	40	50	60
mm	mm	mm	mm	mm	mm	mm	mm	mm	mm	mm	mm	mm	mm	mm	mm	mm	mm	mm
45	52,5	12	15	31	4	15	33	M5	x		x	x						
45	52,5	12	15	31	4	15	33	M6		x	x	x	x	x		x		
65	75	16	20	37	6	19	45	M6		x	x	x	x	x		x		
65	75	16	20	37	6	19	45	M8			x	x	x	x	x	x	x	x
80	91	19	23	45	12	24	56	M8				x	x	x	x	x	x	x
80	91	19	23	45	12	24	56	M10				x	x	x		x	x	x
95	108	22	27	53	13	27	64	M12					x	x		x	x	

#### Ordering example

- Group + A + M + Thread Length ---> K LH3B 45 M 6x 20