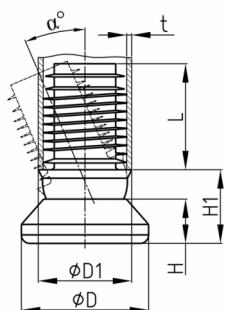


Product Group GG 2000

Heavy duty articulated glides made of PA 6 with plastic slide base

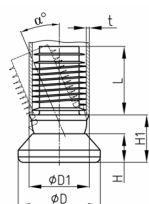


Standard Colours

- black RAL 9005

Material

- Polyamide 6 (PA 6)



Product information

- Base from Ø 30 mm qualified for sport floors DIN 18032
- Suitable for wet rooms and outdoor seating
- Topple over-falling-sliding test of the LGA Nürnberg
- Sliding test on various floors of the LGA Nürnberg
- LGA-Certificate
- The article groups GGx2000 have been tested by the LGA with a displacement test and a tilt/fall test and are randomly tested annually. The tilt and fall test is already a test procedure that goes far beyond the normal or intended use of the chairs. In the event that chairs are pushed with momentum against fixed floor thresholds, we cannot accept any warranty, although moving chairs against floor thresholds is not critical for the intended use by the user. When stacking chairs and for contract seating, ensure that the floor is level and free of cracks and solid floor thresholds.
- e.S. = extra shank
- Series GGx2000 are patented.
- Patent 23 312 EP/PCT - DE 199 23 320
- The shafts of the furniture glides are fitted with screw fins to facilitate installation in the tubes (wall thickness 2 mm).

Product options on inquiry

- Shaft for tube diameter 20 mm is available with screw rib or clamp trips.
- Further shaft measures starting with 19x1-1,5
- Further base measures up to appr. 60 mm
- No materials possible for reinforcement or electrical diverting.

Order Number	α °	D mm	D1 mm	H mm	H1 mm	L mm	t mm
GG2000 25 / 16x1-1,5	19 (-22)	25	16	9	15,5	24,5	1-1,5
GG2000 25 / 16x1,5-2	19 (-22)	25	16	9	15,5	24,5	1,5-2
GG2000 25 / 16x2-2,5	19 (-22)	25	16	9	15,5	24,5	2-2,5
GG2000 25 / 18x1,5-2	19 (-22)	25	18	9	15,5	24,5	1,5-2
GG2000 25 / 18x2-2,25	19 (-22)	25	18	9	15,5	24,5	2-2,25
GG2000 25 / 18x2,5-3	19 (-22)	25	18	9	15,5	24,5	2,5-3
GG2000 25 / 19x1-1,5	19 (-22)	25	19	10	18,5	24,5	1-1,5
GG2000 25 / 19x1,5-2	19 (-22)	25	19	10	18,5	24,5	1,5-2
GG2000 25 / 20x1,5-2	19 (-22)	25	20	10	18,5	24,5	1,5-2
GG2000 25 / 20x1,2-1,5 e.S.	19 (-22)	25	20	10	18,5	24,5	1,2-1,5



Walter Bethke GmbH & Co. KG

Technische Kunststoff - und Hybridprodukte

Order Number	α °	D mm	D1 mm	H mm	H1 mm	L mm	t mm
GG2000 25 / 20x1,75-2 e.S.	19 (-22)	25	20	10	18,5	24,5	1,75-2
GG2000 25 / 22x1-1,5	19 (-22)	25	22	10	18,5	24,5	1-1,5
GG2000 25 / 22x1,5-2	19 (-22)	25	22	10	18,5	24,5	1,5-2
GG2000 25 / 25x1,5-2	19 (-22)	25	25	10	18,5	24,5	1,5-2
GG2000 25 / 28x1,5-2	19 (-22)	25	28	10	18,5	24,5	1,5-2
GG2000 30 / 16x1,5-2	19 (-22)	30	16	8,5	14	24,5	1,5-2
GG2000 30 / 16x2-2,5	19 (-22)	30	16	8,5	14	24,5	2-2,5
GG2000 30 / 18x1,5-2	19 (-22)	30	18	8,5	14	24,5	1,5-2
GG2000 30 / 18x2-2,25	19 (-22)	30	18	8,5	14	24,5	2-2,25
GG2000 30 / 18x2,5-3	19 (-22)	30	18	8,5	14	24,5	2,5-3
GG2000 30 / 19x1-1,5	19 (-22)	30	19	10,5	19	24,5	1-1,5
GG2000 30 / 19x1,5-2	19 (-22)	30	19	10,5	19	24,5	1,5-2
GG2000 30 / 20x1,5-2	19 (-22)	30	20	10,5	19	24,5	1,5-2
GG2000 30 / 20x1,2-1,5 e.S.	19 (-22)	30	20	10,5	19	24,5	1,2-1,5
GG2000 30 / 20x1,75-2 e.S.	19 (-22)	30	20	10,5	19	24,5	1,75-2
GG2000 30 / 22x1-1,5	19 (-22)	30	22	10,5	19	24,5	1-1,5
GG2000 30 / 22x1,5-2	19 (-22)	30	22	10,5	19	24,5	1,5-2
GG2000 30 / 25x1,5-2	19 (-22)	30	25	10,5	19	24,5	1,5-2
GG2000 30 / 28x1,5-2	19 (-22)	30	28	10,5	19	24,5	1,5-2
GG2000 35 / 19x1-1,5	19 (-22)	35	19	10,5	17,5	24,5	1-1,5
GG2000 35 / 19x1,5-2	19 (-22)	35	19	10,5	17,5	24,5	1,5-2
GG2000 35 / 20x1,5-2	19 (-22)	35	20	10,5	17,5	24,5	1,5-2
GG2000 35 / 22x1-1,5	19 (-22)	35	22	10,5	17,5	24,5	1-1,5
GG2000 35 / 22x1,5-2	19 (-22)	35	22	10,5	17,5	24,5	1,5-2
GG2000 35 / 25x1,5-2	19 (-22)	35	25	10,5	17,5	24,5	1,5-2
GG2000 35 / 28x1,5-2	19 (-22)	35	28	10,5	17,5	24,5	1,5-2