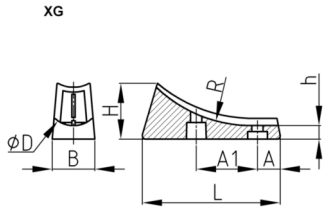


Product Group XG

Shell glides made of PE for cantilever chairs

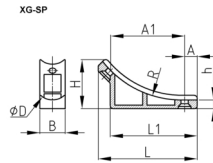
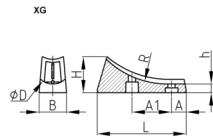
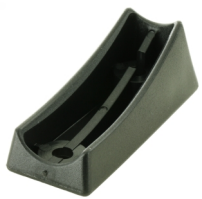


Standard Colours

- black

Material

- Base body: Polyethylene (PE)



Order Number	A	A1	B	D	h	H	L	L1	R
	mm	mm	mm	mm	mm	mm	mm	mm	mm
XG 22 / 71	9,5	42,3	27	22	6,5	25,8	71		90
XG 25 / 72,5 SP	9,5	51	25,5	25	8,3	38	72,5	63	80
XG 25 / 72,5	9,5	42,3	30	25	8,3	30,2	71		80
XG 32 / 75	12	28	32,5	32	8,3	30	75		96
XG 38 / 75	12	28	32	38	8,3	30	75		96