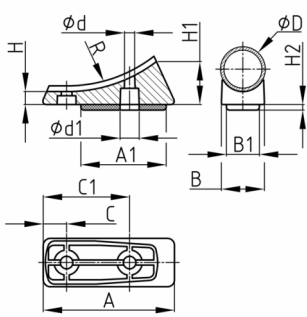


### Product Group XGK

Shell glides made of PE with plastic sliding surface for cantilever chairs

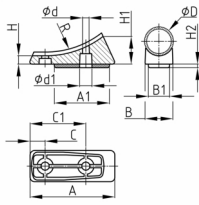


#### Standard Colours

- black

#### Material

- Base body: Polyethylene (PE)
- Slide base: Polyethylene (PE) - uncoloured



Order Number	A	A1	B	B1	C	C1	D	d	d1	H	H1	H2	R
	mm	mm	mm	mm	mm	mm	mm	mm	mm	mm	mm	mm	mm
XGK 22/71	71	50	27	21	9,5	52	22	5,9	10	6,5	23,5	3	90
XGK 25/72,5	72,5	50	30	21	9,5	52	25	5,9	10	8,3	28,5	3	80